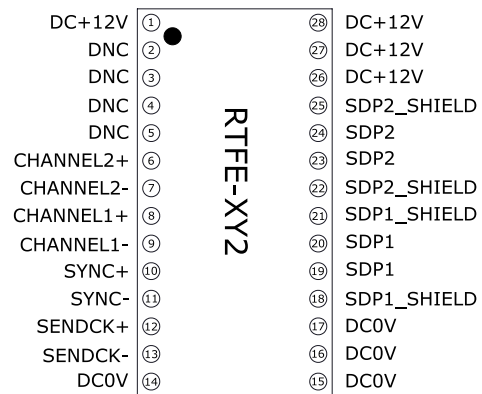


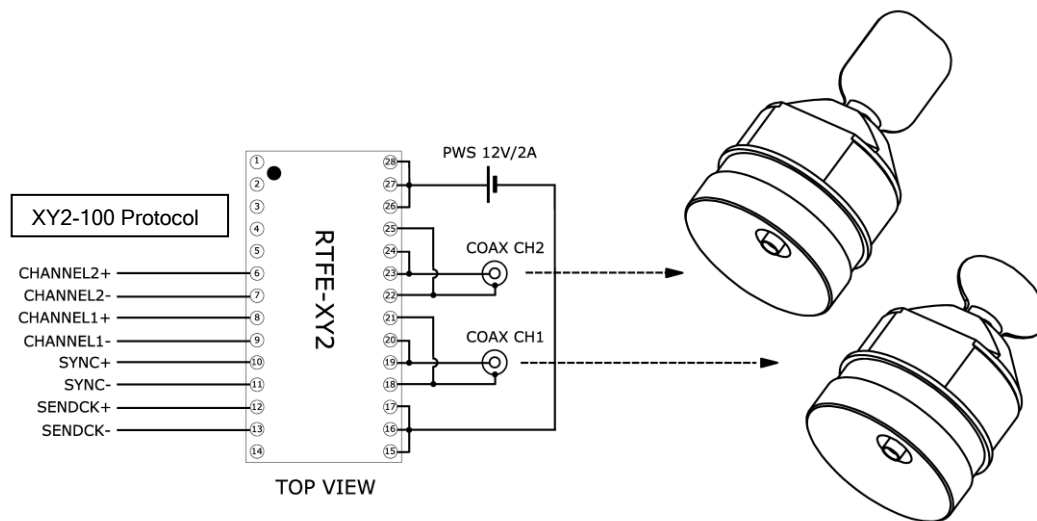
FEATURES

- XY2-100 to SDP transfer protocol convertor
- Dual-in-line package
- Fits standard Socket IC, DIL, 0.6", 28 way
- Connector type: DIP
- Row Pitch: 15.24 mm
- Pitch Spacing: 2.54 mm



TOP VIEW

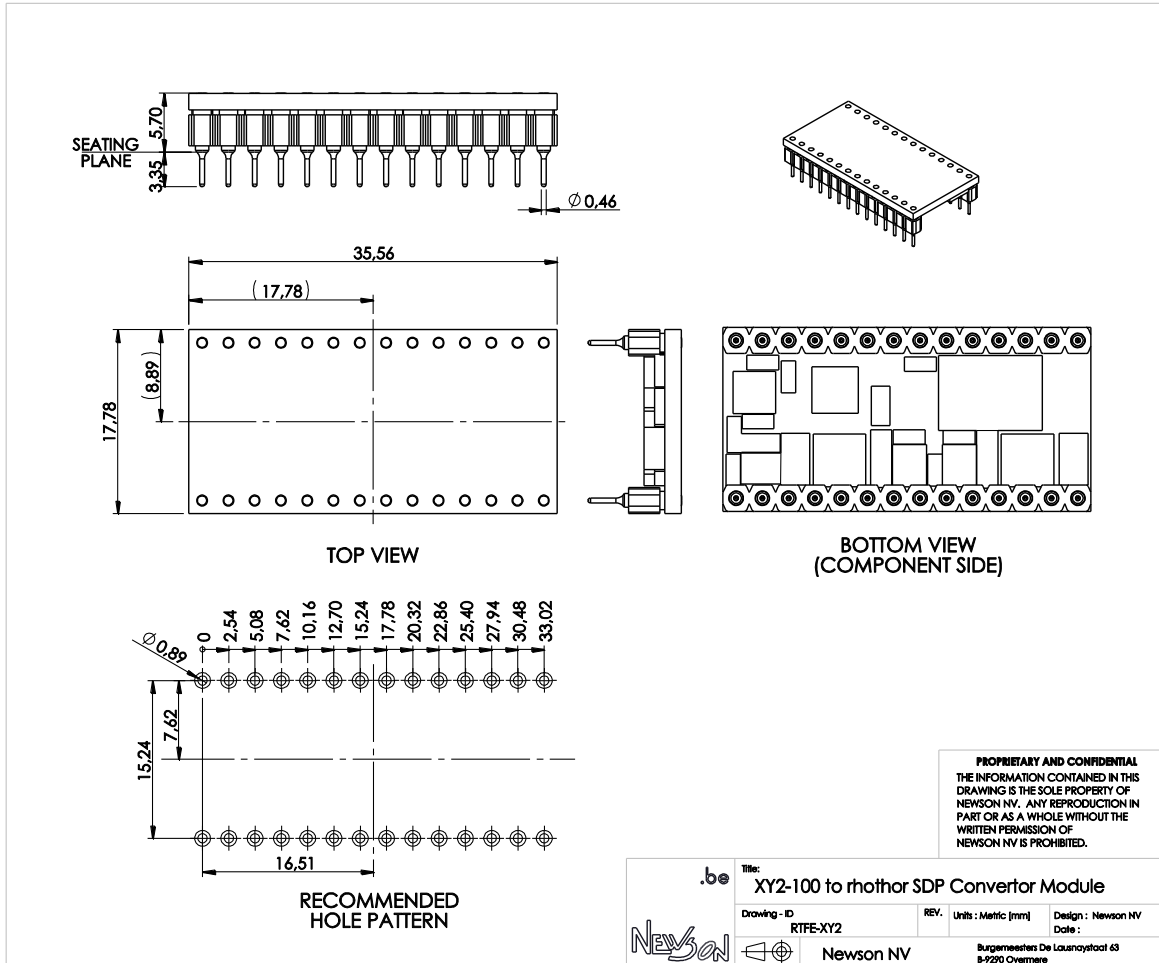
TYPICAL APPLICATION CONNECTIONS



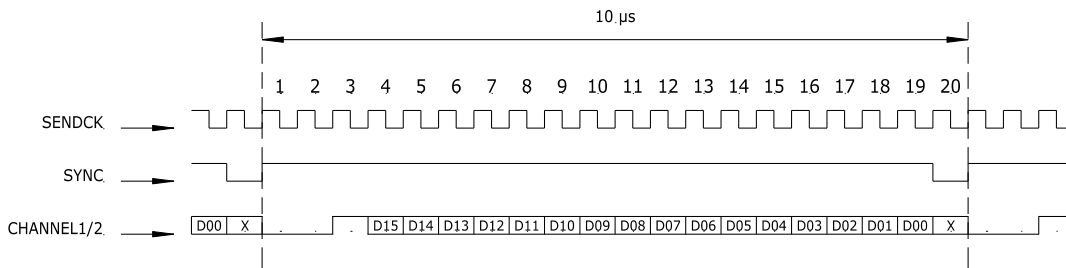
PIN DESCRIPTION

Pin No.	Name	Description
1,26,27,28	DC+12V	Power supply input 12V
14,15,16,17	DC 0V	Power supply input 0V
2,3,4,5	DNC	Do not connect
6 / 7	CHANNEL2+ / CHANNEL2-	Setpoint data input (XY2-100) to channel2
8 / 9	CHANNEL1+ / CHANNEL1-	Setpoint data input (XY2-100) to channel1
10 / 11	SYNC+ / SYNC-	Synchronises data transfer
12 / 13	SENDCK+ / SENDCK-	Continuously running clock
18,21	SDP1_SHIELD	Connection to deflector channel1
19,20	SDP1	Connection to deflector channel1
22,25	SDP2_SHIELD	Connection to deflector channel2
23,24	SDP2	Connection to deflector channel2

PACKAGE INFORMATION



XY2-100 PROTOCOL INFORMATION



[D15-D00]: Setpoint, offset binary
 [X]: DC

Clock to data timing specification		Min	Typ	Max	Units
SENDCK FREQUENCY	fCK		2	2	MHz
DATA-IN SETUP TIME	tDS	50			ns
DATA-IN HOLD TIME	tDH	100			ns